



NOIR COAST



NOIR COAST with Loft



STEEL CREEK



STEEL CREEK with Loft



TAFT STREET



TAFT STREET with Loft



Del Webb Ponte Vedra

2 - 5 Bedrooms | 2 - 4 Full Baths
1,289 – 2,738 Sq. Ft.

- 9 Single-Family Home Designs from the Mid-\$200's
- 1-Story Homes with Loft Options
- Gated Community
- 2-3 Car Garages and Covered Lanai
- Less than 4 Miles to the Atlantic Ocean
- 37,800 sq. ft. Anastasia Clubhouse with 30+ Clubs & Classes
- Tennis, Pickle Ball and Bocce Ball Courts
- Indoor and Outdoor Resort-Style Pools, Spa & Fitness Center
- Central Park with Resident Gardening & Event Lawn
- 6-Miles of Nature Walking Trails Surrounded by Nocatee Preserve

124 Del Webb Parkway
Ponte Vedra, Florida 32081

866-224-4231
DelWebb.com/PonteVedra

Artist's renderings are conceptual only and are not intended to be an exact representation or show specific detailing. Square footage, room dimensions and spatial arrangements on this plan are approximate and may vary in final construction and may vary by elevation. See a sales representative for details. ©2016 Pulte Home Corporation. All Rights Reserved. 11/16 CGC1519936



PORTFOLIO OF HOMES



GARDEN SERIES

Del Webb[®]
PONTE VEDRA

*Elevation 3 shown. Room dimensions, square footage and window sizes and locations may vary based on elevation selection.

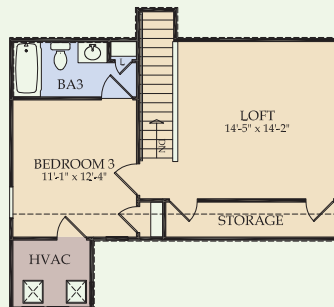
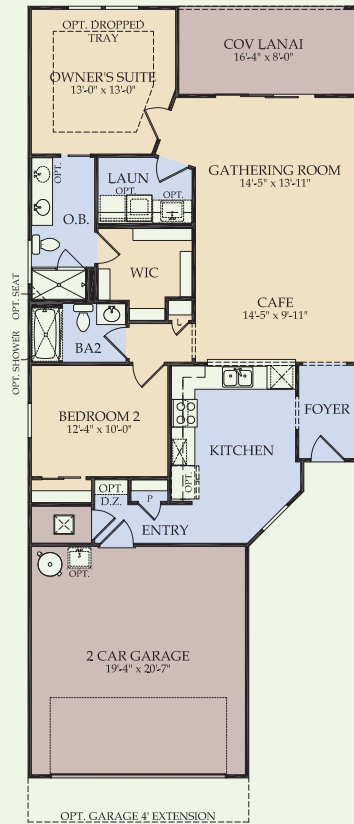
NOIR COAST

1,289+ Sq. Ft.

2 - 3 Bedrooms | 2 - 3 Full Baths

2-Car Garage

Mid-\$200's



Loft w/ Bed and Bath
Adds 563 SF

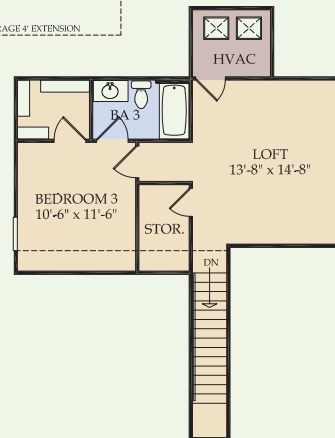
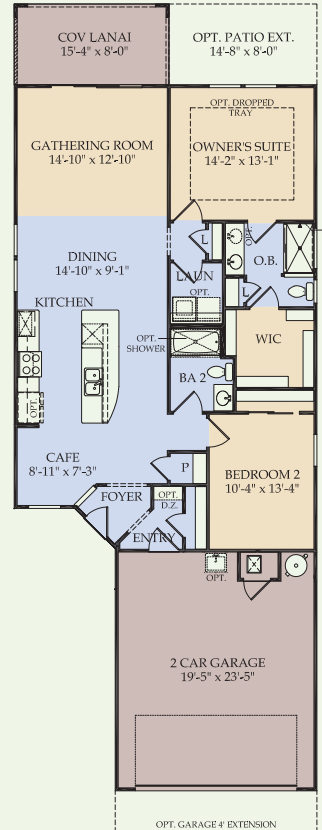
STEEL CREEK

\$1,372+ Sq. Ft.

2 - 3 Bedrooms | 2 - 3 Full Baths

2-Car Garage

Mid-\$200's



Loft w/ Bedroom and Bath
Adds 580 SF

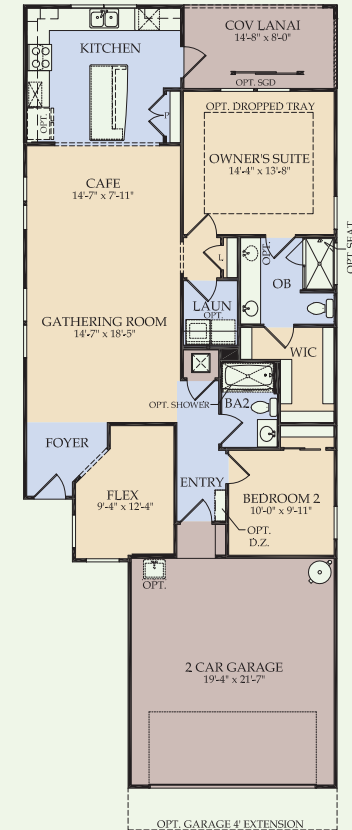
TAFT STREET

1,433+ Sq. Ft.

2 - 4 Bedrooms | 2 - 3 Full Baths

2-Car Garage

Mid-\$200's



Loft with Bedroom and Bath
Adds 606 S.F.